

TC94 GENERAL PURPOSE HANGING SCALE



LCD

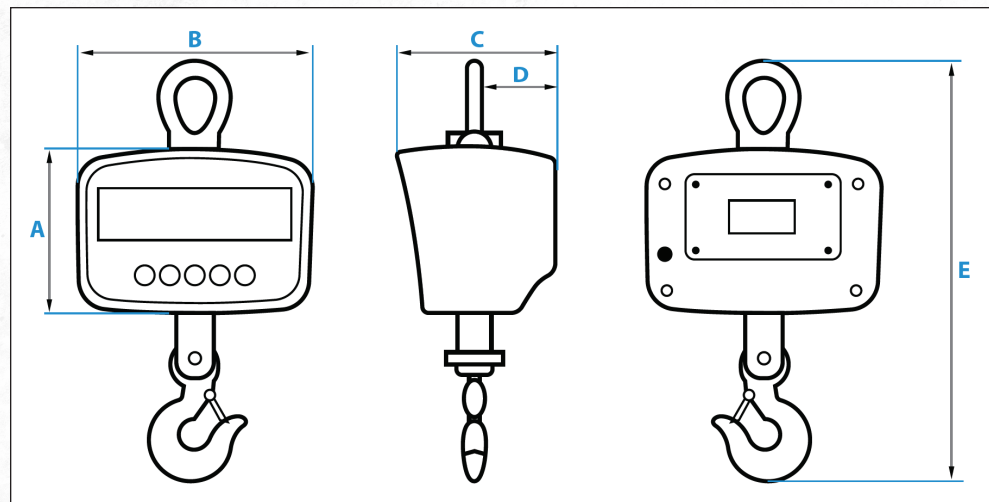


LED

FEATURES

- Economical, lightweight and hand held general purpose crane scale
- Features an easy to read, backlit LED or LCD display
- Measured values in either pounds (lb) or kilograms (kg)
- Powered using a rechargeable battery pack (up to 80 hours)
- The standard remote controller allows users to change units, clear measurements, zero and tare out weight
- Remote controller can capture peak weight at a distance of up to 100ft. (30m)

PART#	CAPACITY	WEIGHT	PART#	CAPACITY	WEIGHT
LED DISPLAY			LCD DISPLAY		
TC94A-500	500 lbs x 0.1 lbs / 250 kgs	12 lbs	TC94B-500	500 lbs x 0.1 lbs / 250 kgs	12 lbs
TC94A-1000	1000 lbs x 0.2 lbs / 500 kgs	12 lbs	TC94B-1000	1000 lbs x 0.2 lbs / 500 kgs	12 lbs
TC94A-1500	1500 lbs x 0.5 lbs / 750 kgs	12 lbs	TC94B-1500	1500 lbs x 0.5 lbs / 750 kgs	12 lbs
TC94A-2000	2000 lbs x 0.5 lbs / 1000 kgs	17 lbs	TC94B-2000	2000 lbs x 0.5 lbs / 1000 kgs	17 lbs
TC94A-3000	3000 lbs x 0.5 lbs / 1500 kgs	17 lbs	TC94B-3000	3000 lbs x 0.5 lbs / 1500 kgs	17 lbs



EXTERIOR DIMENSIONS				
A	B	C	D	E
5.88"	8.50"	5.75"	2.91"	15.16"-17.13"

TC95 HEAVY DUTY CRANE SCALE



LCD

6K lb to 20k lb



LED

SPECIFICATIONS

- **ACCURACY CLASS:** III
- **TARE RANGE:** 100% F.S.
- **INITIAL ZERO RANGE:** ± 10% max. capacity
- **MANUAL ZERO RANGE:** ± 2% max. capacity
- **OVERLOAD:** 100% F.S.
- **DISPLAY:** 5 digit; LED or LCD
- **POWER:** 6V/3.2Ah battery
- **CHARGER:** AC110V input
- **SURROUNDING:** -5°F ~ 140°F
- **OPERATING TEMPERATURE:** 15°F ~ 105°F
- **WARRANTY:** 1 year limited warranty

FEATURES

- Durable cast aluminum housing
- Ideal for harsh environments
- Features an easy to read, backlit LED or LCD display
- Measured values in either pounds (lb) or kilograms (kg)
- Powered using a rechargeable battery pack (up to 80 hours)
- Wireless remote controller allows users to change units, clear measurements, zero and tare out weight
- Remote controller can capture peak weight at a distance of up to 100ft. (30m)

PART#	CAPACITY	SHIP WT.	DISPLAY
TC95A-6000	6000 lbs x 1 lbs	26 lbs	LED
TC95B-6000	6000 lbs x 1 lbs	26 lbs	LCD
TC95A-10000	10,000 lbs x 2 lbs	30 lbs	LED
TC95B-10000	10,000 lbs x 2 lbs	30 lbs	LCD
TC95A-20000	20,000 lbs x 5 lbs	60 lbs	LED
TC95B-20000	20,000 lbs x 5 lbs	60 lbs	LCD
TC95A-40000	40,000 lbs x 10 lbs	205 lbs	LCD and LED
TC95A-60000	60,000 lbs x 10 lbs	285 lbs	LED
TC95A-80000	80,000 lbs x 20 lbs	370 lbs	LED
TC95A-100000	100,000 lbs x 20 lbs	490 lbs	LED



Front LED
Back LCD

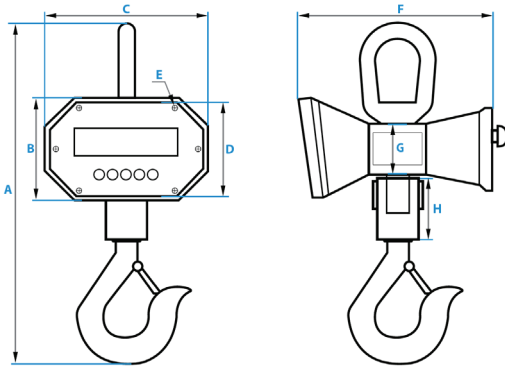
40K lb



60K lb to 100k lb

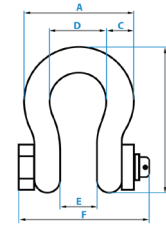
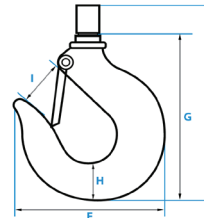
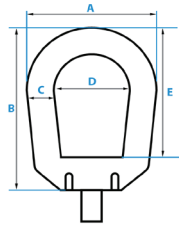
TC95 DIAGRAM

6K, 10K, 20K ▼

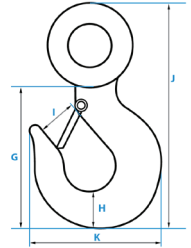


EXTERIOR DIMS. 6K, 10K, 20K			
A	B	C	D
18"; 26"; 29"	6.14"	9.83"	5.65"
E	F	G	H
0.28"	11.2"	2.97"	3.5";6.5";8.5"

6K- 10K LBS ▼

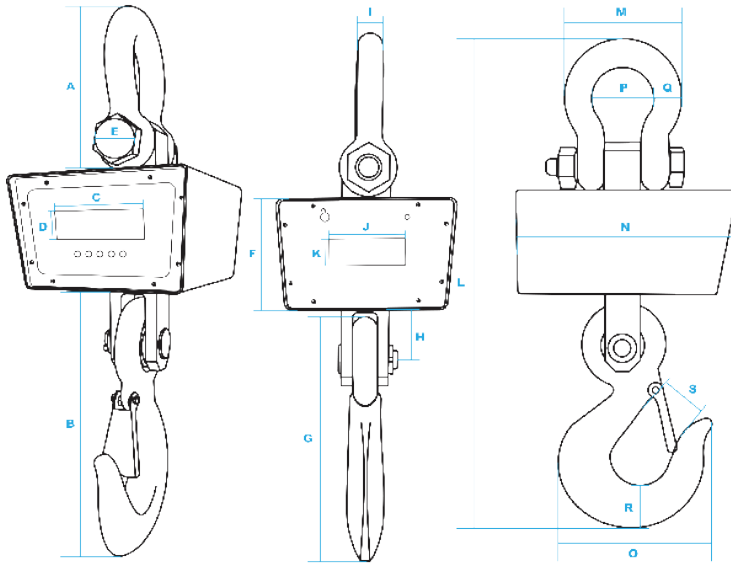


20K LBS ▼



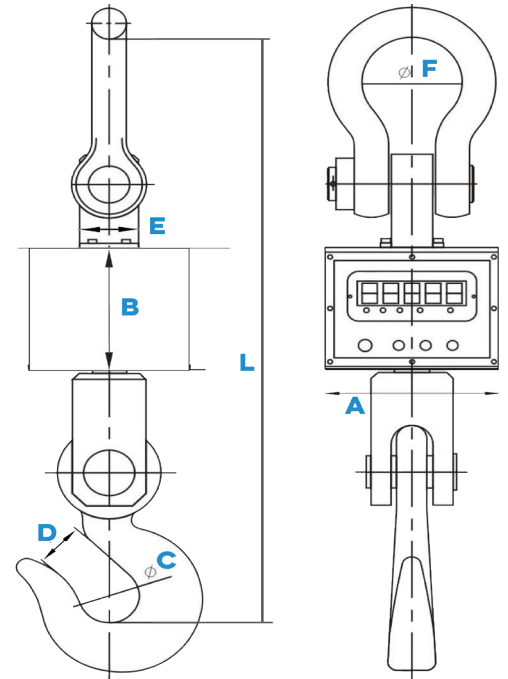
HOOK DIMENSIONS						
CAPACITY	A	B	C	D	E	F
6,000 lbs	4.52"	5.91"	0.95"	3.58"	4.72"	4.54"
10,000 lbs	5.40"	7"	1.25"	2.95"	1.92"	6.50"
20,000 lbs	6"	8"	1.40"	3.21"	2.21"	7.25"
CAPACITY	G	H	I	J	K	
6,000 lbs	5.36"	1.45"	1.45"	6.06"	•	
10,000 lbs	6.40"	1.91"	1.65"	9.50"	6"	
20,000 lbs	8"	2.40"	2"	12.20"	7"	

40,000 LBS ▼



EXTERIOR DIMS. - 40,000 LBS									
A	B	C	D	E	F	G	H	I	J
5.5"	20"	6"	1.2"	2.9"	7.5"	17"	4.5"	1.95"	5"
K	L	M	N	O	P	Q	R	S	•
1.6"	40"	9.25"	15.75"	13.25"	5"	2.25"	4"	3.4"	•

60K-100K LBS ▼



60K-100K DIMENSIONS				
CAPACITY	A	B	C	D
60,000 lbs	9.29"	6.25"	5.11"	4.72"
80,000 lbs	11.81"	8.46"	5.90"	5.11"
100,000 lbs	11.81"	8.46"	5.90"	5.11"
CAPACITY	E	F	L	
60,000 lbs	8.34"	5.90"	39.05"	
80,000 lbs	11.81"	8.42"	47.75"	
100,000 lbs	11.81"	8.42"	47.75"	

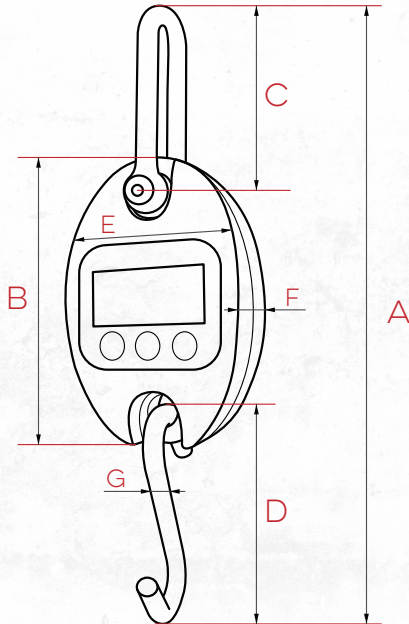
TC91 PORTABLE HANGING SCALE



FEATURES

- Portable industrial hanging scale offers quick solutions
- Light weight and pocket sized for ultimate portability
- LCD display with clear characters
- Zero, Tare and lb/kg selection features
- Operates on 3 AA batteries (included)

PART#	CAPACITY	SHIP WT.
TC91-30	30 lb x 0.01 lb / 15kg x 0.005kg	1.5 lbs
TC91-60	60 lb x 0.02 lb / 30 kg x 0.01 kg	1.5 lbs
TC91-150	150 lb x 0.1 lb / 100 kg x 0.05kg	1.5 lbs
TC91-300	300 lb x 0.1 lb / 150 kg x 0.05kg	1.5 lbs
TC91-600	600 lb x 0.2 lb / 300 kg x 0.1 kg	1.5 lbs



TC91 DIMENSIONS						
A	B	C	D	E	F	G
11.5"	5.20"	3.75"	4.10"	3.45"	1.60"	0.40"

TC95W HEAVY DUTY WIRELESS CRANE SCALE

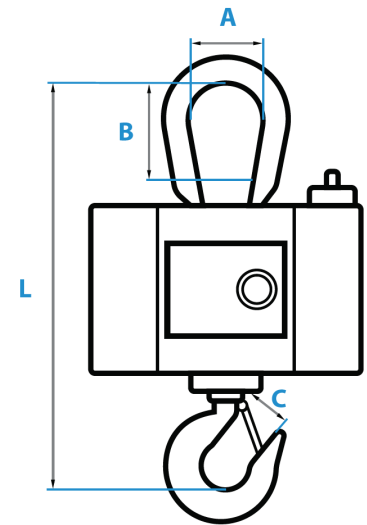


SPECIFICATIONS

- **MATERIAL:** Die-cast
- **DISPLAY:** 5 digit; LED or LCD
- **POWER:** 110V-220V AC adapter
- **SURROUNDING:** -5°F ~ 140°F
- **OPERATING TEMPS:** 15°F ~ 105°F
- **WARRANTY:** 1 year limited warranty

FEATURES

- Capacity of 10K lbs to 100K lbs
- Die-cast construction for harsh environments
- Rechargeable battery with up to 80 hrs of batter life
- High accuracy alloy steel load cell
- Rugged alloy steel shackle and alloy steel swivel hook
- 400% overload protection and overload warning
- Built in thermal printer
- Wireless communication with controller
- Factory pre-calibrated for quick set up
- Easy to read LCD display with indicator
- Zero, Tare, Gross, Accumulate, Delete and Check weighing features
- Selectable units: lbs, kgs
- Pre-set Tare, Time Set features
- Voltage display and resolution switch



PART#	CAPACITY	SHIP WT.
TC95W-10000	10,000lbs x 5lb/5,000kgs	110 lbs
TC95W-20000	20,000lbs x 10lb/10,000kgs	126 lbs
TC95W-40000	40,000lbs x 20lb/20,000kgs	230 lbs
TC95W-100000	100,000lbs x 50lb/50,000kgs	1,040 lbs

TC95W DIMENSIONS				
MAX CAP.	A	B	C	L
10,000 lbs	3.62"	5.31"	1.77"	23.03"
20,000 lbs	4.13"	5.51"	2.76"	33.46"
40,000 lbs	5.91"	7.09"	3.15"	37.40"
100,000 lbs	5.91"	7.09"	3.15"	37.40"